

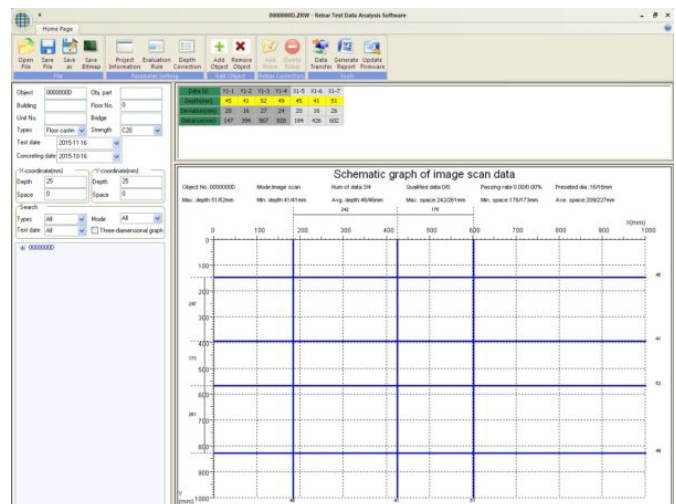
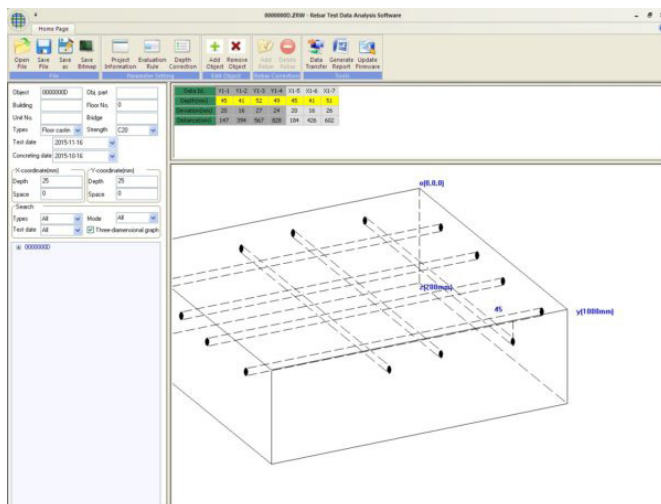
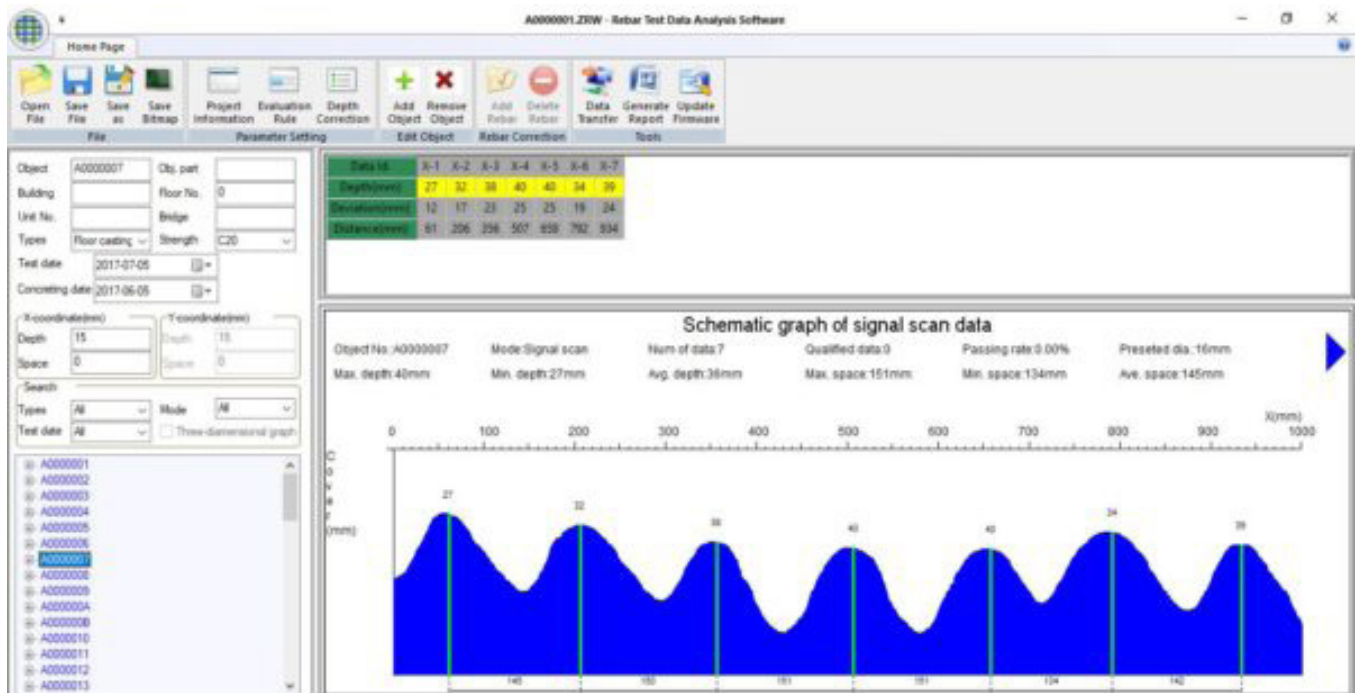
# NOVASCAN R660

Penetrometer for evaluation of the mechanical characteristics of wooden elements



The **Novascan R660** is a rebar detector capable of accurately measuring the position of the longitudinal rods and the stirrups, the thickness of the rebar cover and the diameter of the armature.

**Speed, accuracy and resolution** make the Novascan R660 the most powerful rebar detector on the market today.



Rebar detection data analysis software (hereafter referred to as rebar analysis software) is the Windows application software launched and it is mainly used to process the rebar test data generated by R6 series concrete rebar detectors. With friendly interface, the processing software can be operated conveniently. The operation method and interface form both fully match with Windows style. Users familiar with Windows application software operation can grasp the software easily.

The Novascan R660 is a rebar detector capable of an accurately measuring of the position of the longitudinal rods and the stirrups, the thickness of the rebar cover and the diameter of the armature. Speed, accuracy and resolution make the Novascan R660 the most powerful rebar detector on the market today.

## Main characteristics:

- Integrated sensor that facilitates and speeds up the magnetometer survey;
- Localization, measure of rebar cover and the diameter of the rebars are displayed in real time and with high precision; all on the same screen;
- Five scan modes to suit different test needs: [JGJ Scan], [Profile Scan], [Signal Scan], [Grid Scan], [Scan Image];
- The position of the rebars is indicated by beep and LED light over the viewfinder that makes it extremely intuitive interpretation. The distance between the bars is provided automatically on the same graph;
- Particularly suitable for tight bars;
- Increased distance supported than models R630A and R800: 65m for the [Scan Profile] and [Grid Scan], 10m to the mode [Signal Scan];
- Two ways to view the data, graphically and numerically for better and quick read;
- LCD transfective 3.5 "color high resolution. 6 colors selectable interface;
- Software for analysis and creation of test reports;
- Rechargeable lithium battery with high capacity;
- Integrated, compact, portable and convenient to carry.

## Scan mode:

**JGJ Scan:** Rapid locator with concrete cover and diameter visualization.

**Profile Scan:** It displays position, cover thickness, spacing of adjacent rebar, measuring diameter and other information of the rebar under test by section distribution diagram.

**Signal Scan:** It is divided into two gears "general wave scan" and "dense rebar wave scan". It displays wave form, rebar position, cover thickness, center distance of adjacent rebar, diameter measurement of the rebar under test as well as manual adding and deletion of rebar test points in real time by wave form diagram.

**Grid Scan:** It shows the location, cover thickness and the distance between adjacent rebar of grid tested rebar on grid graph.

**Image Scan:** It is a comprehensive analysis for multiple scans in X and Y direction at specific area, based on signal scan and grid scan, it is applicable for rebar test environment with irregular distribution.

By using of the supplied software ZRW you can achieve a 3D visualization of the bars analyzed for the **JGJ Scan**, the **Image Scan** and the **Profile Scan**.

## Caratteristiche tecniche:

Rebar thickness range (mm)	$\phi 6 \sim \phi 50$
Max range (mm)	Primo step: 1 ~ 80
	Secondo step: 1 ~ 180
Maximum allowed error for protective layer	$\pm 1$ (mm): 1 ~ 59
	$\pm 2$ (mm): 50 ~ 78
	$\pm 4$ (mm): 70 ~ 180
Applicable range (mm)	$\phi 6 \sim \phi 32$
Max allowed error for diameters measurement	$\pm 2$

## Function:

- 3D imaging;
- Scan range borderless;
- Data correction;
- Data transmission: USB;
- Screen: 320x240;
- Power: Built-in battery;
- Size (mm): 240x93x110;
- Weight (kg): 0,67;
- Probe: integrate.

## Accessories:

- Software ZRW for data processing;
- USB Cable;
- Manual;
- Battery charger;
- Certificate of conformity;
- Rigid suitcase for transport.